

Utilization of BIM to Hotel FM System

IIBH

SATO FACILITIES CONSULTANTS, INC.

TAKAYOSHI SATO

Introduction

Benefits of BIM utilization in facility management

The case of A Hotel Group

Agenda

- ▶ Introduction of A Hotel Group
- ▶ Issues of A Hotel Group
- ▶ Effect of utilizing BIM in FM
- ▶ Future use of BIM

Introduction of A Hotel Group

- ▶ A hotel group is a large-scale city hotel chain.
 - 20 buildings nationwide
 - 100 to 150 guest rooms per building

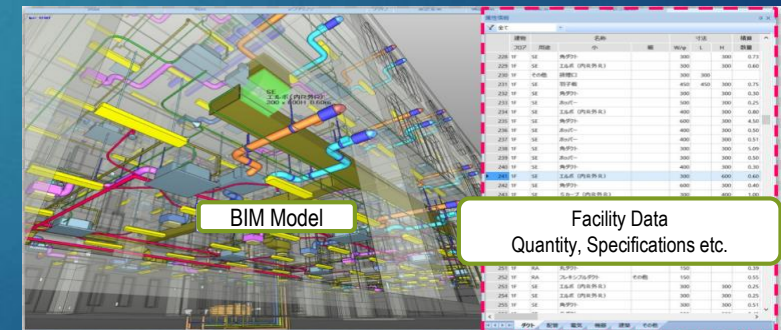


Issues of A Hotel Group

- ▶ Scattered data for facility management
- ▶ Difficulty in creation and maintenance of asset management ledger
- ▶ Not systematic repair plan
- ▶ Difficulty in acquiring data indispensable for business analysis
- ▶ Rising facility operation cost

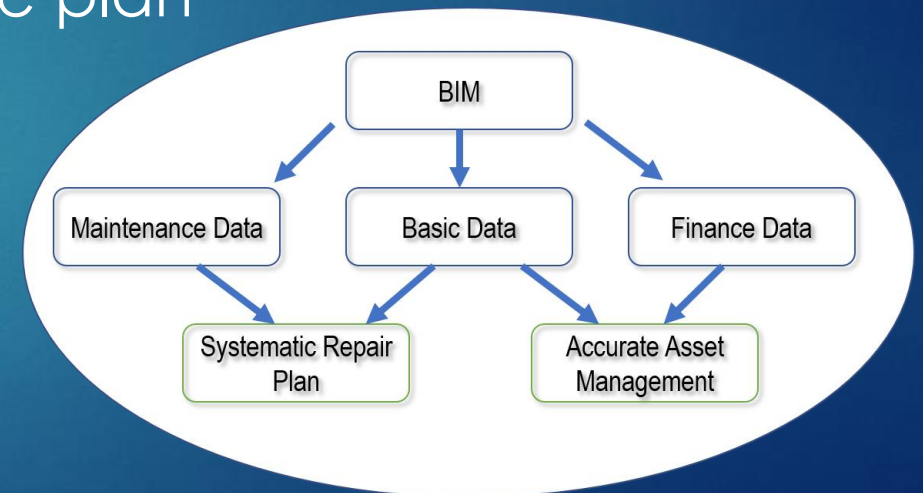
Effects of utilizing BIM for FM operations 1

- ▶ Excellent data management
- Improve efficiency of data creation / update work
- Save cost and time for data management work



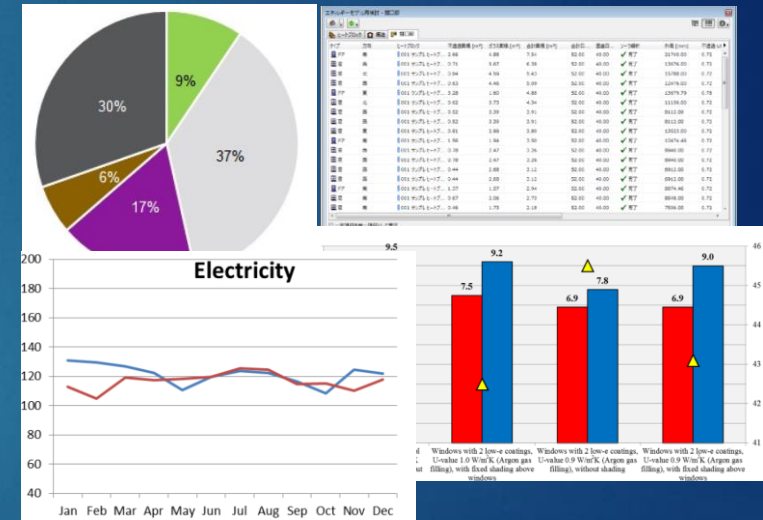
Effect of utilizing BIM for FM operations 2

- ▶ Unified information
- Improve efficiency of asset valuation
- Formulate systematic repair and update plan



Effect of utilizing BIM for FM operations 3

- ▶ Simulation
- Set effective benchmark
- Enable superior management decisions
- Devise optimal facilities for energy saving



Future use of BIM in FM

- ▶ In the occasion of building new hotel, detailed planning is possible by utilizing BIM visualization and simulation technology
- ▶ Sharing as-built image of the building
- ▶ Saving future operation and maintenance expenses
- ▶ Formulating optimal repair plan
- ▶ Controlling energy management

