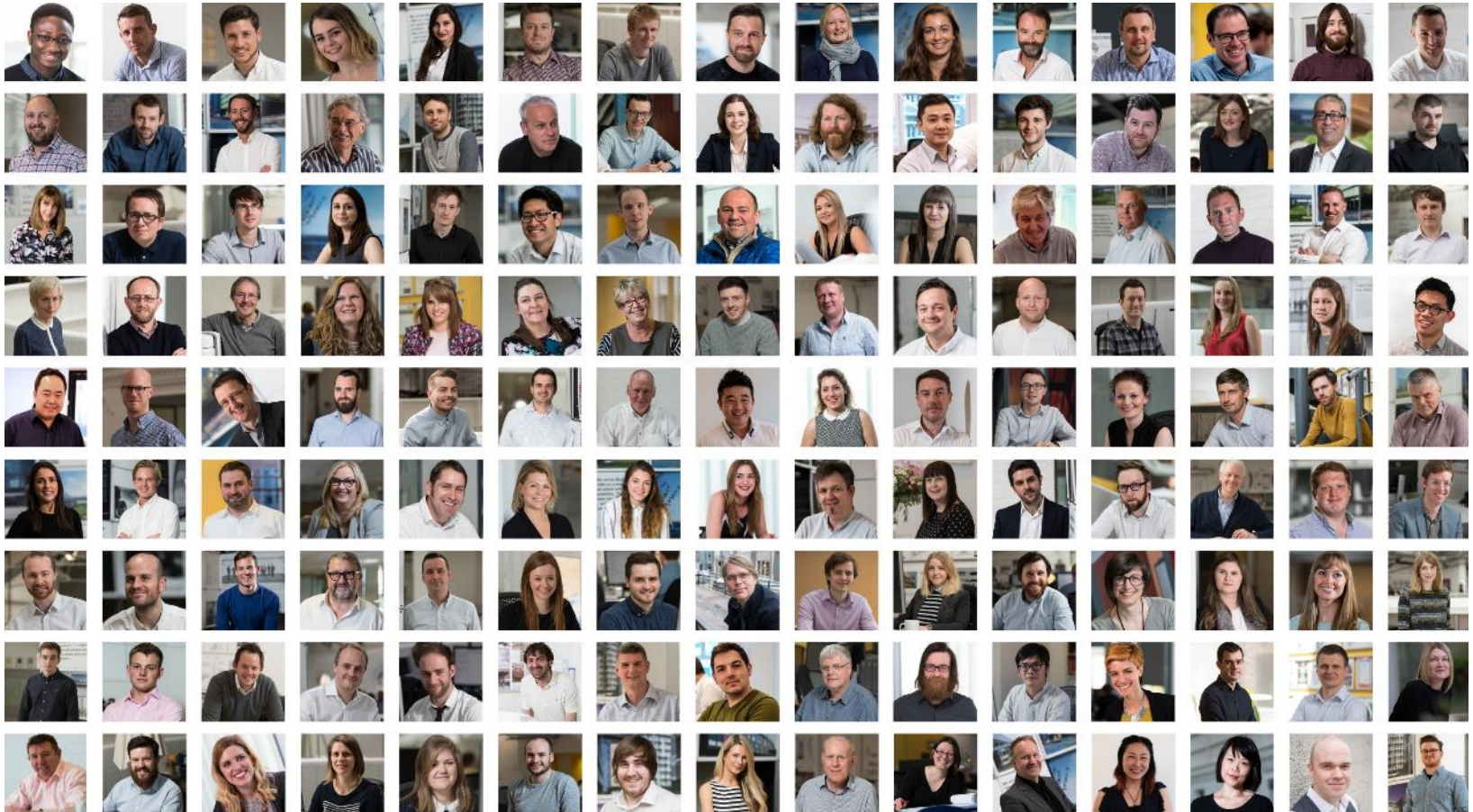


Ryder



Everything architecture

Everything architecture

Our goal is simple - to improve the quality of the world around us and, in doing so, improve people's lives. An approach embedded in the origins of Ryder which remains a touchstone today.

Everything architecture is based on principles of simplicity, usefulness and elegance. It connects people to places, from the room to the city.

It defines a responsibility to society and to the future of our planet. It is embedded as much in pioneering science and technology as in art and is the foundation for the collective journey from the initial vision through designing and making and beyond into use - learning from each project for the benefit of the next.

Everything architecture relies on leadership to transcend the professional silos. It requires talented people with a passion for collaborative project working, to deliver the best return on investment for our clients.

Values

Passionate about our people, service and architecture

Pioneering in our approach to redefining architectural practice

Collaborative across communities in which we work and the wider industry to deliver the best return for our clients and the environment

Metrics



147 people

Passionate about redefining architectural practice



Number 10

The Sunday Times 100 Best Companies to Work For



80+ Hours

Training per team member per annum



13

Teams

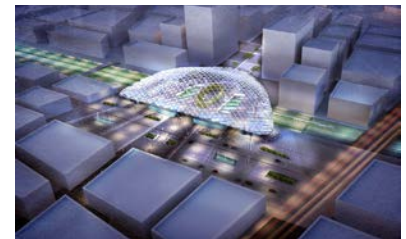
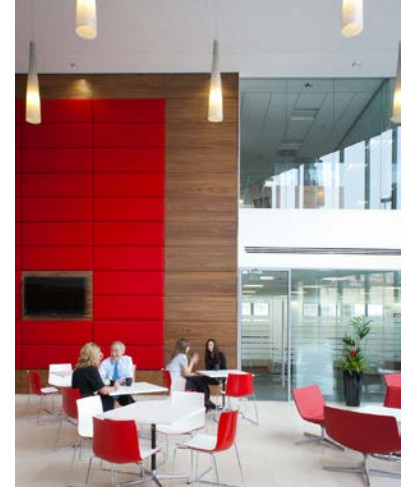
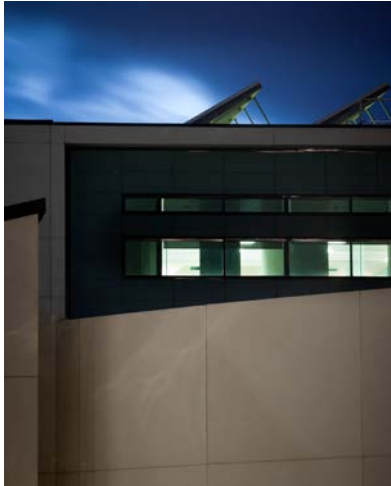


£11m

Turnover



Sectors



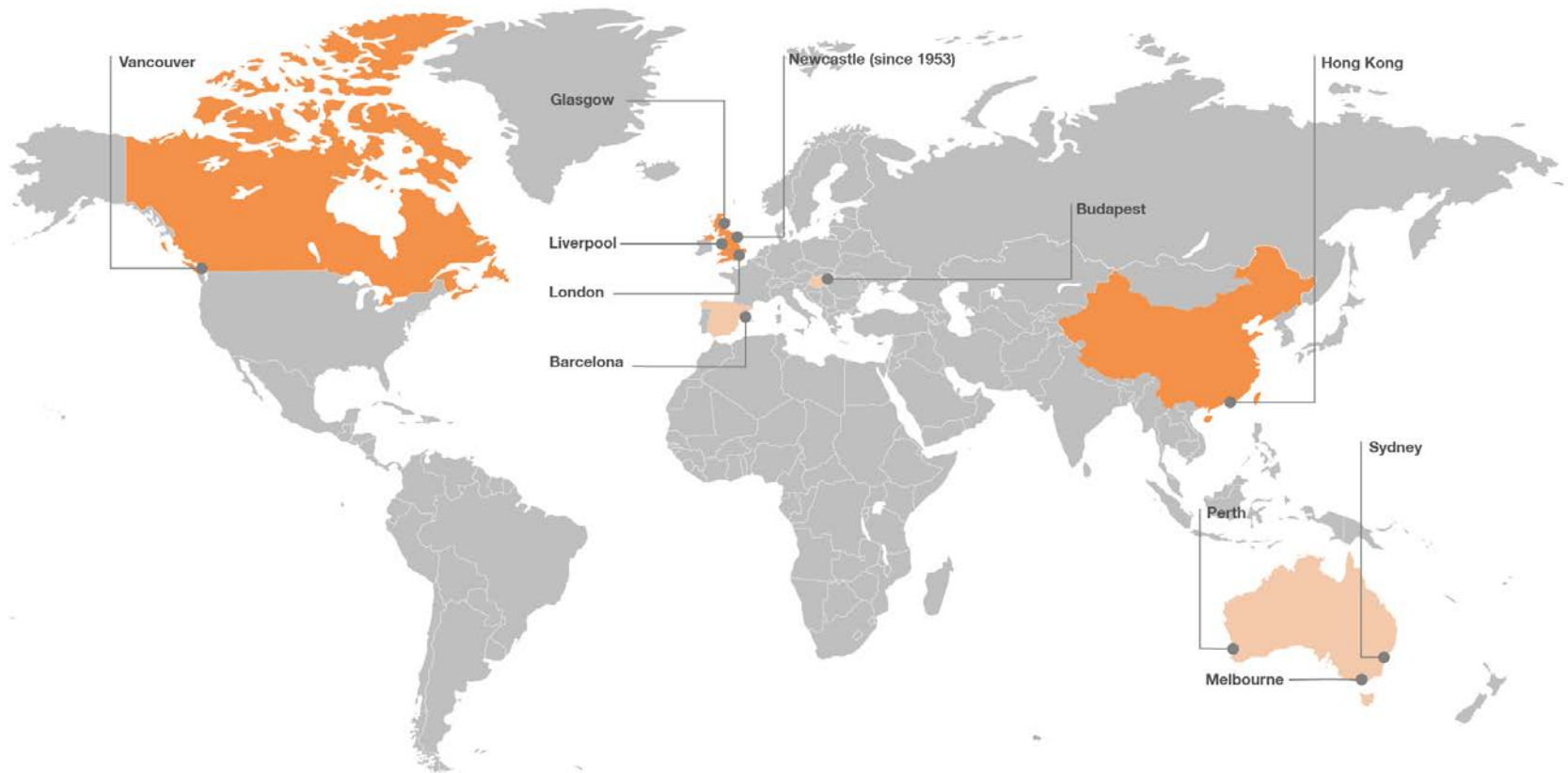
Collaboration

Not all the best people work for Ryder



Alliance

We recognise the importance of industry collaboration through the Ryder Alliance, which benefits likeminded international practices through sharing of best practice, testing new ideas and exchanging talent.



Alliance



Global alliance

Working together in a
collaborative environment



7 practices

Sharing a similar ethos and
entrepreneurial ambition



200 designers

Passionate about redefining
architectural practice

PlanBEE
bimacademy

Pioneering in our approach





BIM Academy develops research and provides consultancy and training in building information modelling internationally. Ryder is a founder and 50% stakeholder in this innovative partnership with Northumbria University.
www.bimacademy.ac.uk





**In 2013 we launched AzuKo, a charity that works to alleviate poverty
Internationally and in the UK promoting dignity through design.**

www.AzuKo.org



Relationships

Relationship formed



1999

Projects delivered

50

Value ranges

£30,000 -

£170m

Total value

£829m



Collaboration

The design of built environment is a creative one which requires the constructive collaboration of many skills, which can only be improved if we foster a greater desire for collaborative inter disciplinary working between those skills.



Education

We need a new breed of creative entrepreneurial graduate, a mix of specialist and generalist, capable of redefining the ways we practice to address the complex social and technical challenges and opportunities which are continually opening up in our fast changing world



PlanBEE

Campaign for change in Built Environment Education

Throughout its existence, Ryder has sought to form partnerships with schools of architecture and the built environment. We have developed our own apprenticeship and bursary programmes to nurture talented students and seen them develop highly successful careers. The time is right for a new synthesis between academia, professional bodies and the wider construction industry, to fundamentally re-examine both the skill sets required and the means which we achieve them.

BY INDUSTRY FOR INDUSTRY

You will get the skills industry needs right now.

There is a need for more collaboration and inter disciplinary working in the construction industry; we need people with a broader set of skills and a different education. This unique programme will help you forge careers in a variety of roles which will change and evolve as your career progresses.

The programme combines study with working for some of the industry's leading companies whose projects take them across the UK and the world.

Focused on the technical and managerial aspects of design and construction the programme is supported by the Chartered Institute of Building (CIOB), the Institute of Civil Engineers (ICE) and the Royal Institute of Chartered Surveyors (RICS). Study will be in three parts providing the opportunity for you to step off after each with a recognised qualification – HNC, HND, BEng Degree*.

There are five areas of study with each part ending in an integrated team based project:

Leadership
Economics
Design
Technology
Production

You will develop knowledge in building design and performance alongside transferable skills like team working and leadership.

Off the job training will be provided by Gateshead College, recently graded Outstanding by Ofsted and offering state of the art construction facilities and with one of our university partners.



Collaboration in practice

Design reviews and workshops

We develop all of our projects through a sequence of open design reviews and workshops.

We work together with consultants, clients and user groups to develop ideas and concepts in these shared forums.

This approach established buy in, a shared ambition and direction for the project and ensures the contribution of all involved from its very inception when influence can be at its greatest.

We co-locate the team during the key stages with design reviews being the principle method of progressing a single, unified design solution.



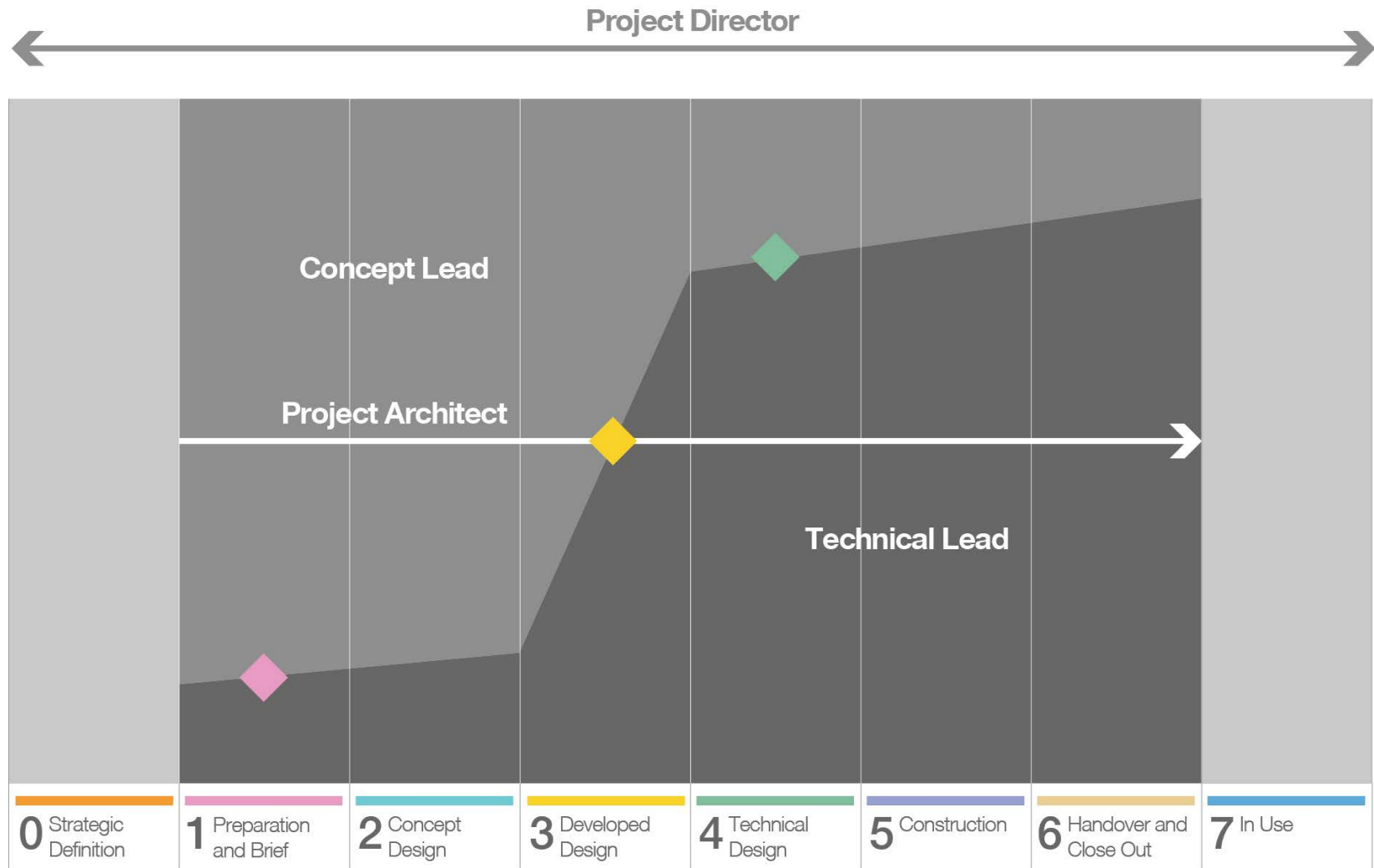
Environment



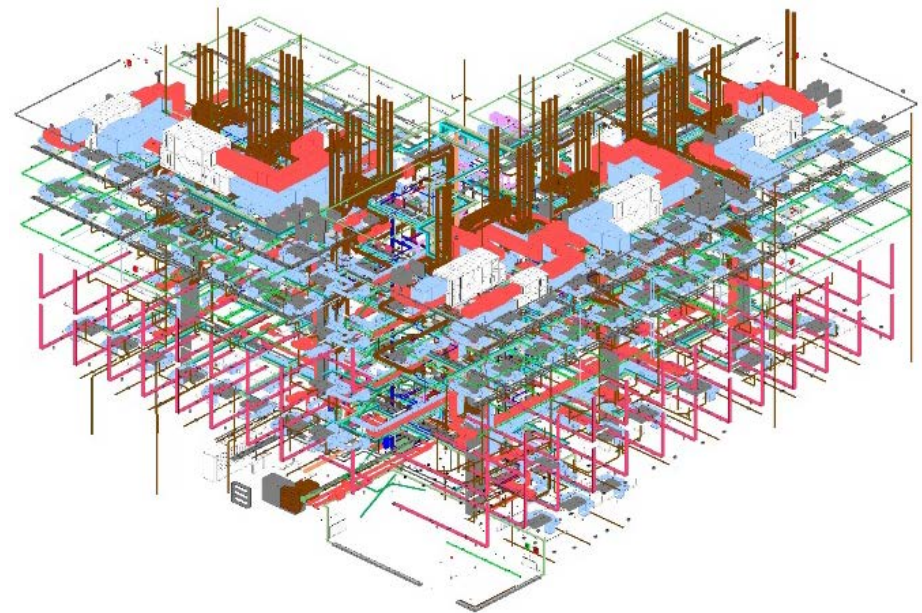
Serendipity



Project Organisation



Technology



Integrated Project Working

Team Structure

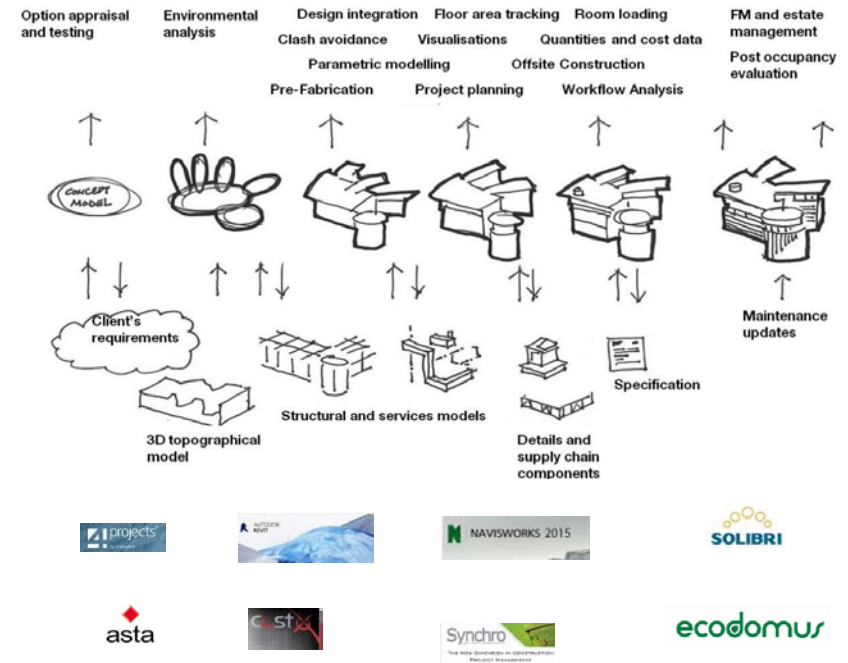
Platforms, CDE

Project Outputs, LODs

Project KPIs

Project Charter

Procurement Models



Result

